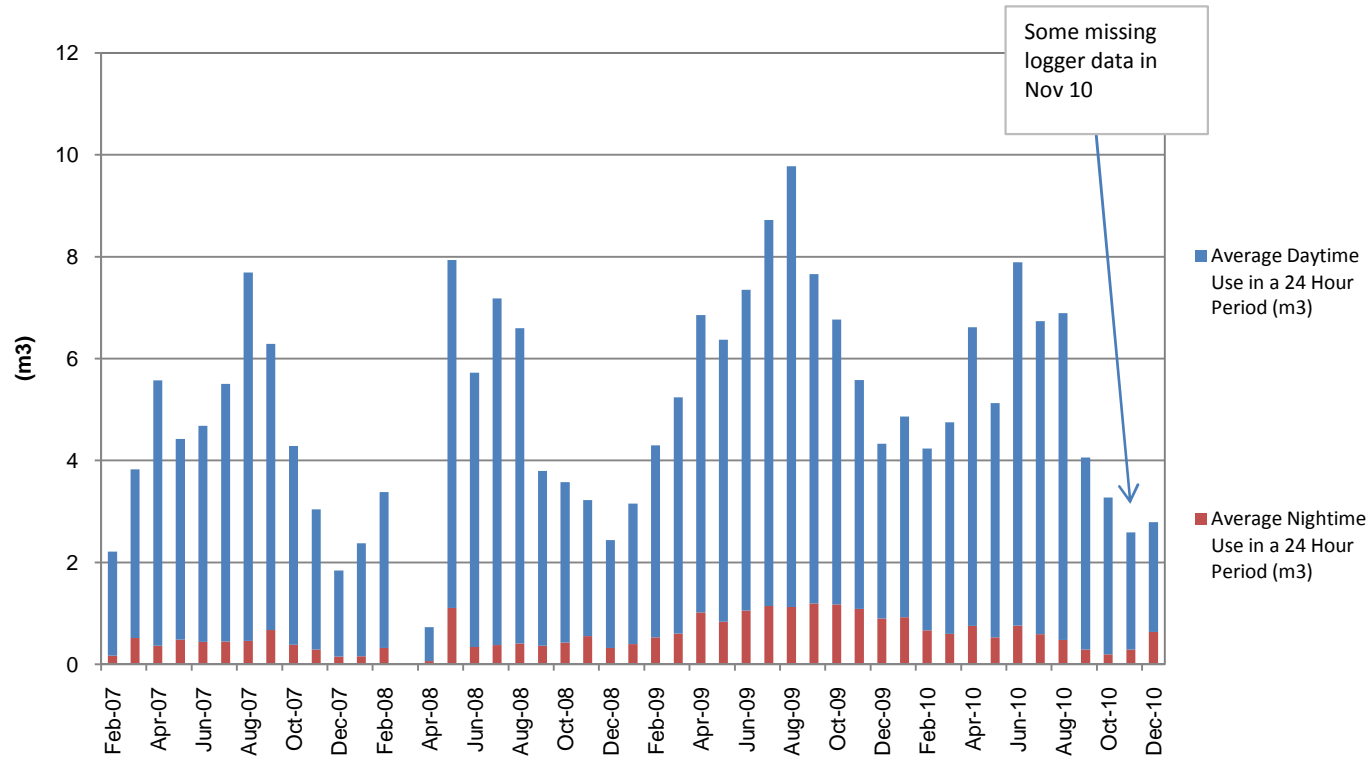
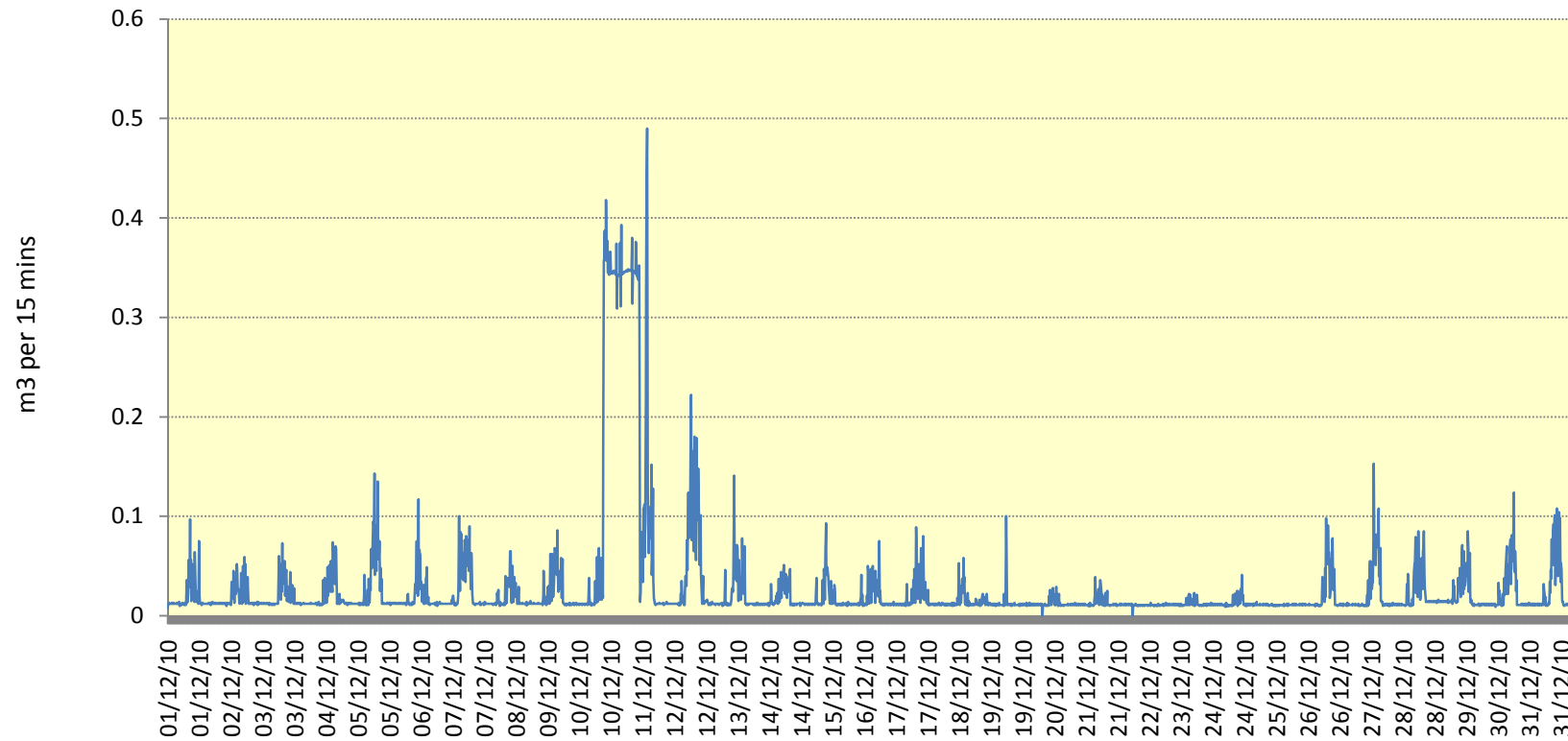


# Arrow Valley Water Average Daily Usage Trends



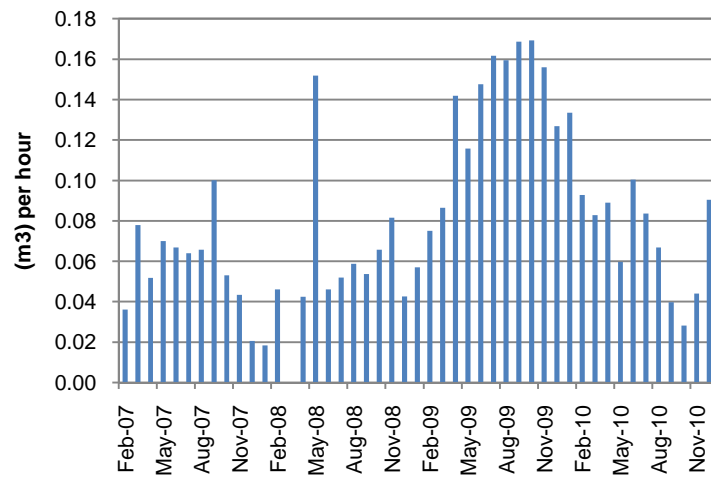
## Arrow Valley Water Usage Quarter Hourly Data

## December 10 Usage

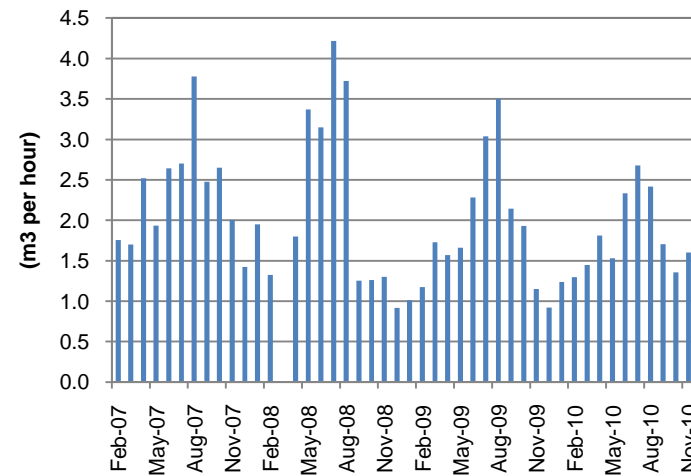


## Arrow Valley Water Usage Baseload and Maximum Demand Trends

**Average Baseload in Month**

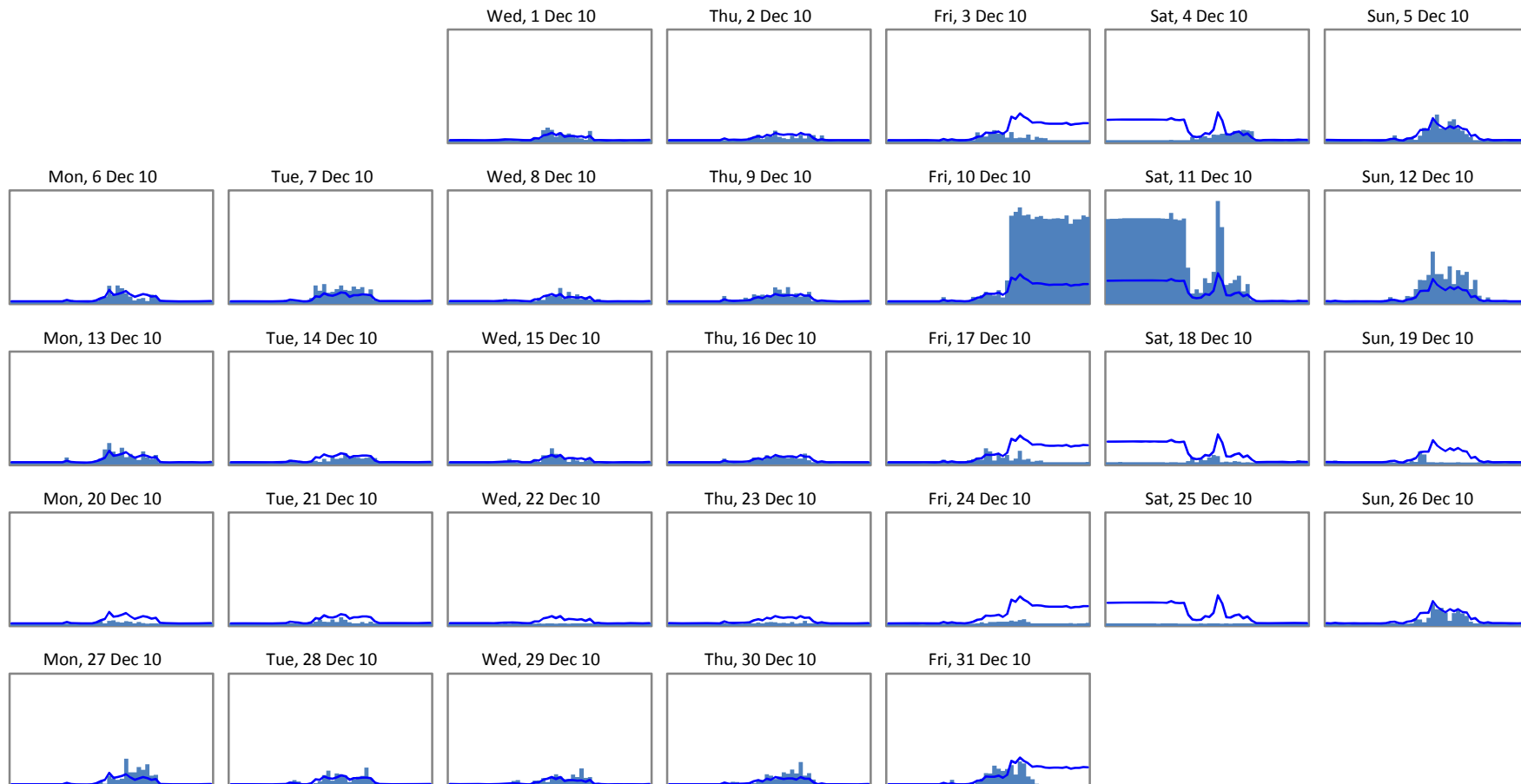


**Maximum Demand in Month**

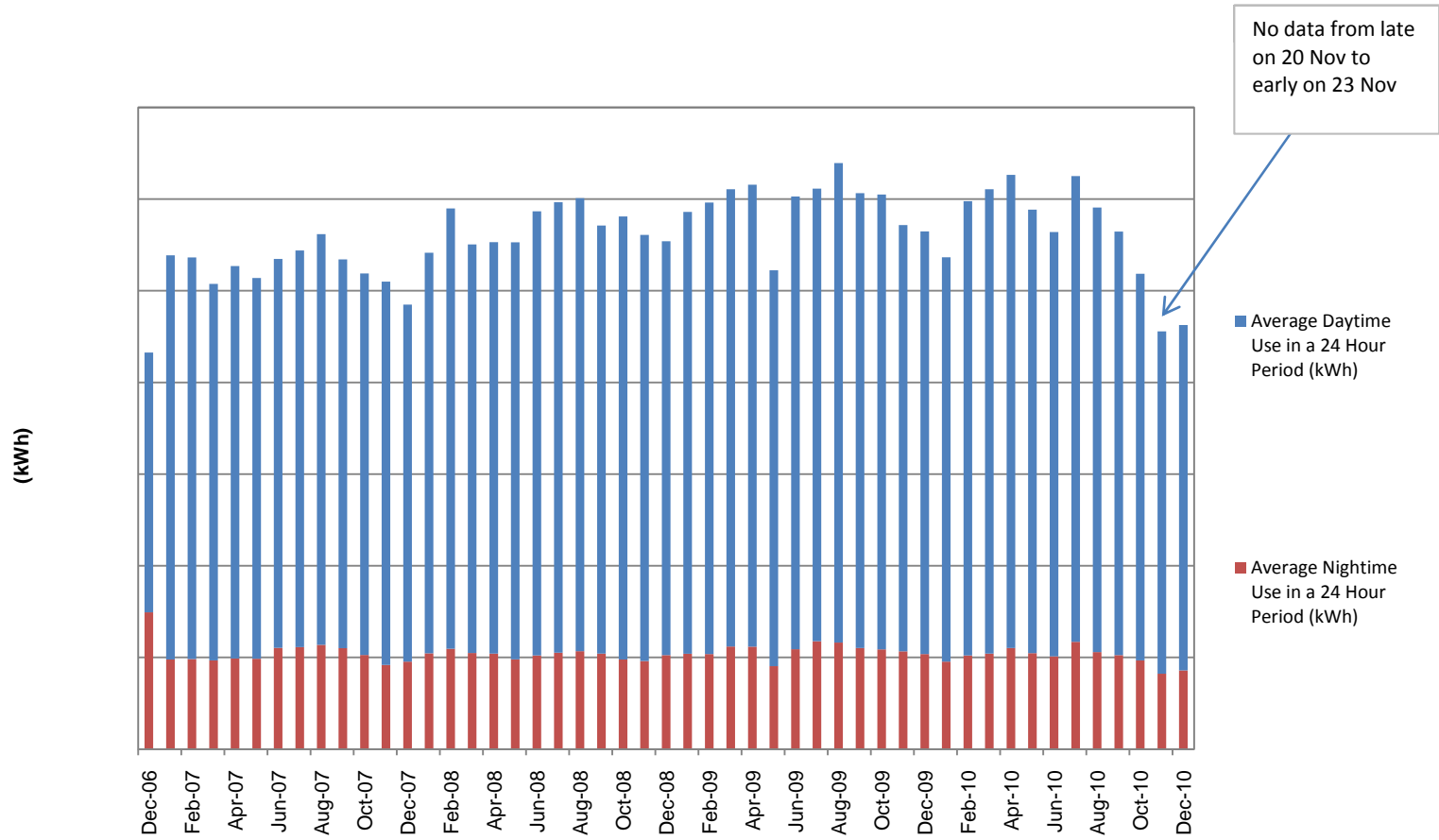


# Arrow Valley Water Daily Usage

# December 10 Usage

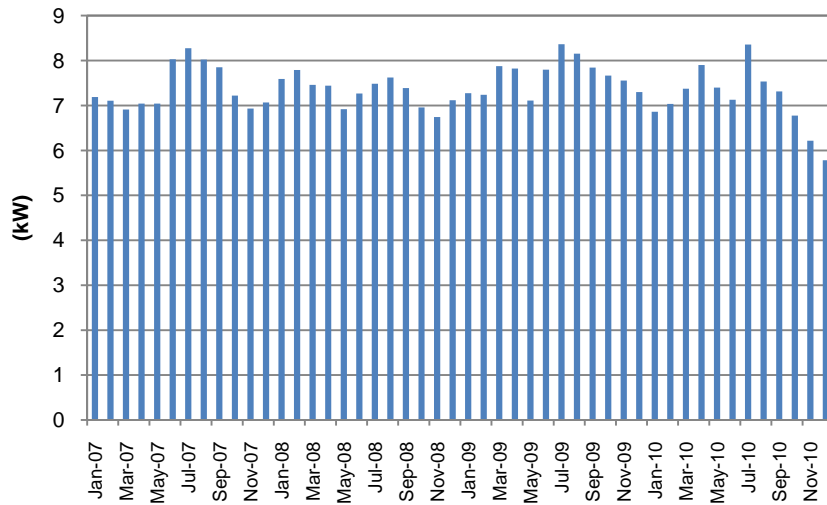


# Arrow Valley Electricity Average Daily Usage Trends

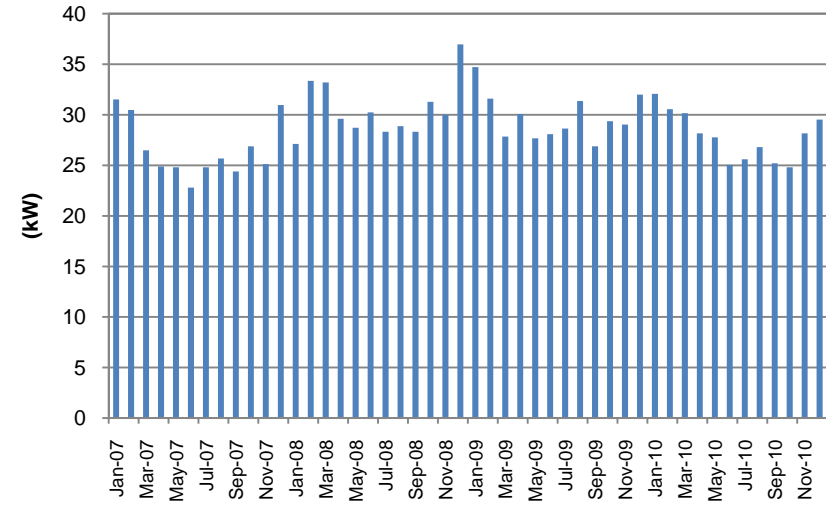


# Arrow Valley Electricity Baseload and Maximum Demand Trends

**Average Baseload in Month**

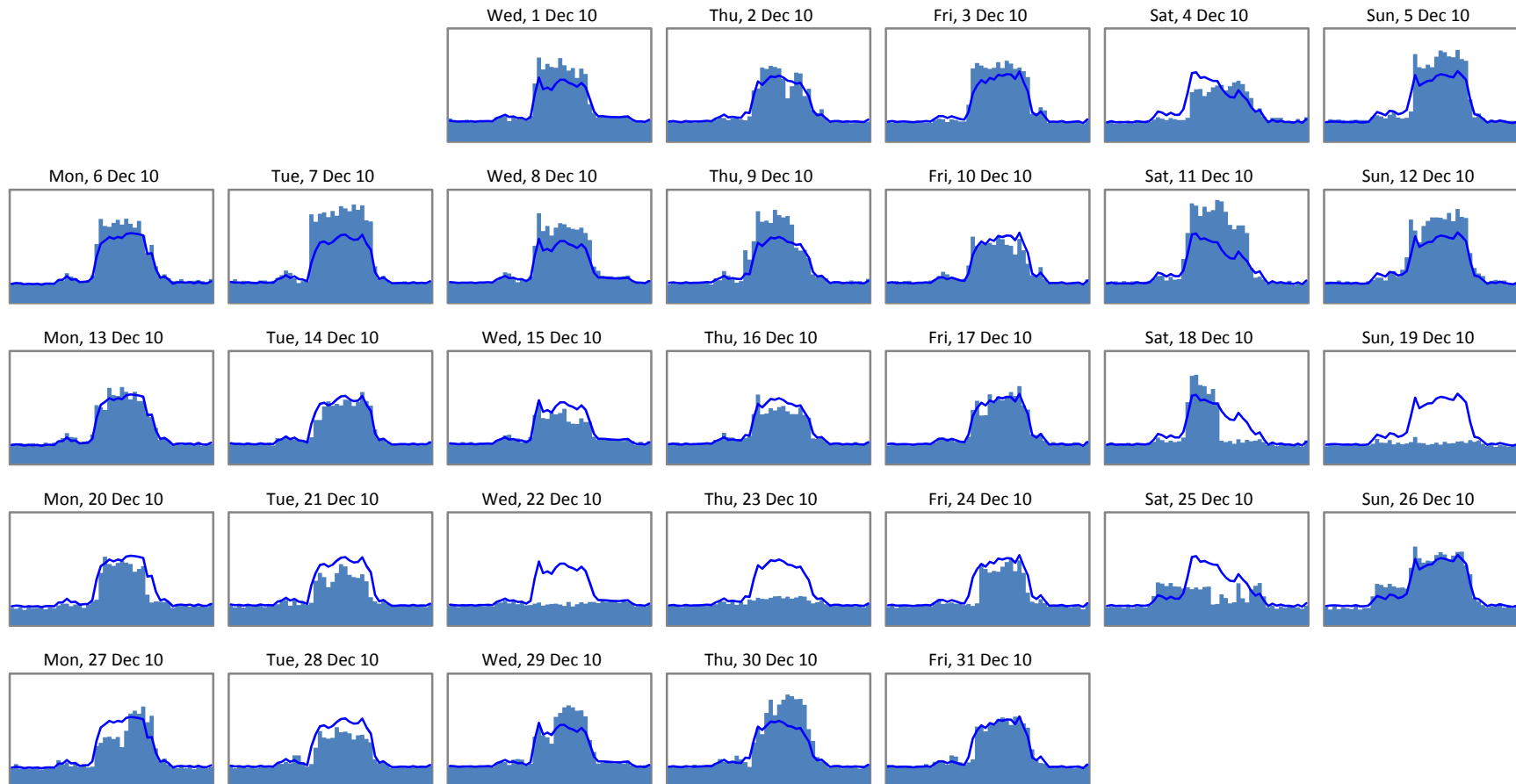


**Maximum Demand in Month**



# Arrow Valley Electricity Daily Usage

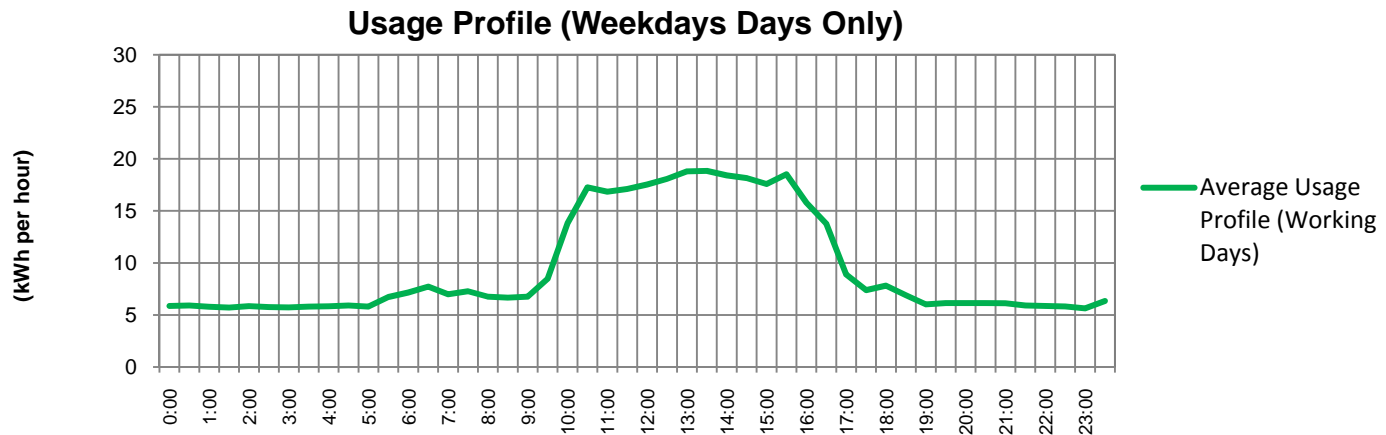
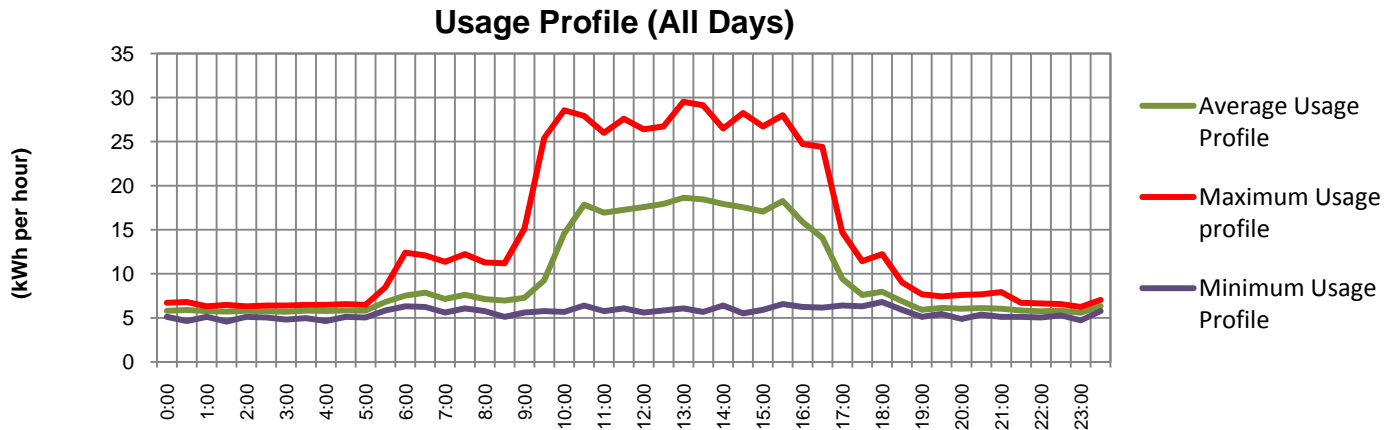
# December 10 Usage



All chart scales run from 0 to 16.2359999999462 kWh (energy per half-hour interval). Average profiles are included for each day of the week.

# Arrow Valley Electricity 24 Hour Usage Profiles

# December 10 Usage



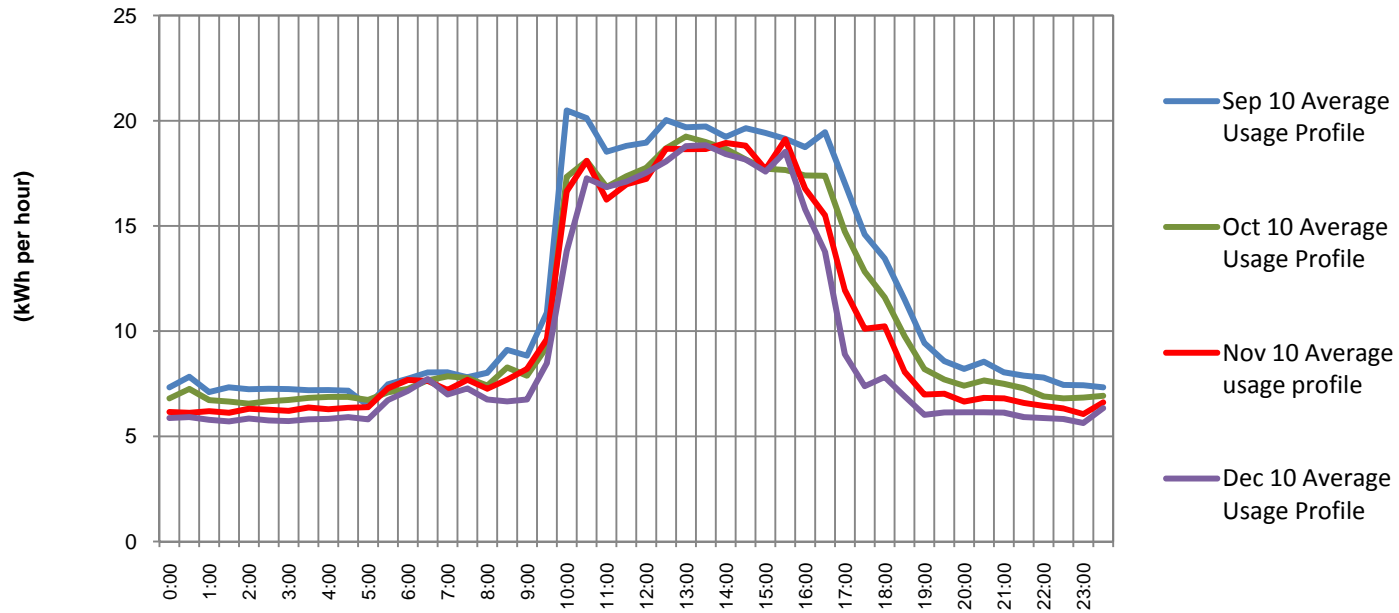




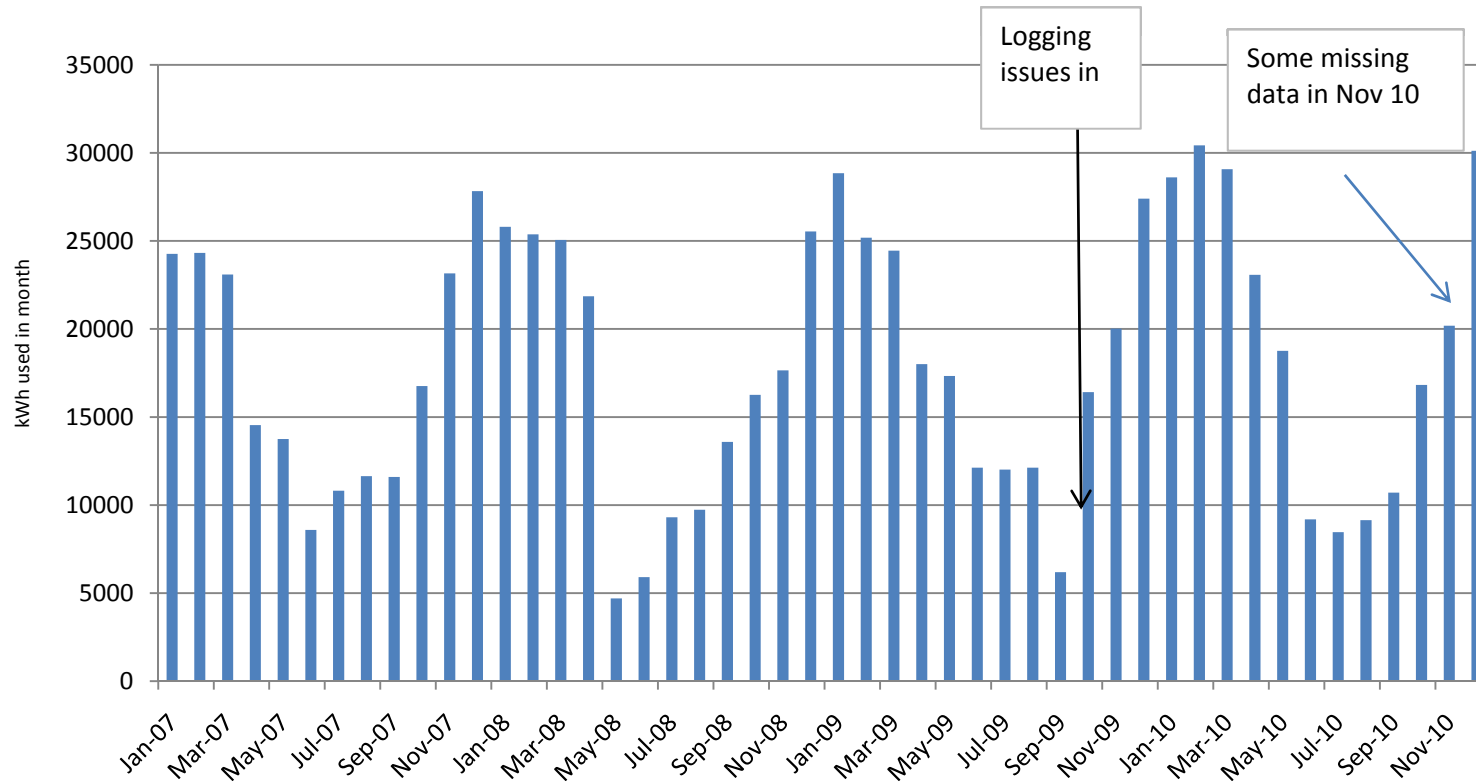
# Arrow Valley Electricity 24 Hour Usage Profiles

# Aug to Nov 10 Comparison

### Usage Profile (All Days)



# Arrow Valley Gas Monthly Usage Trends

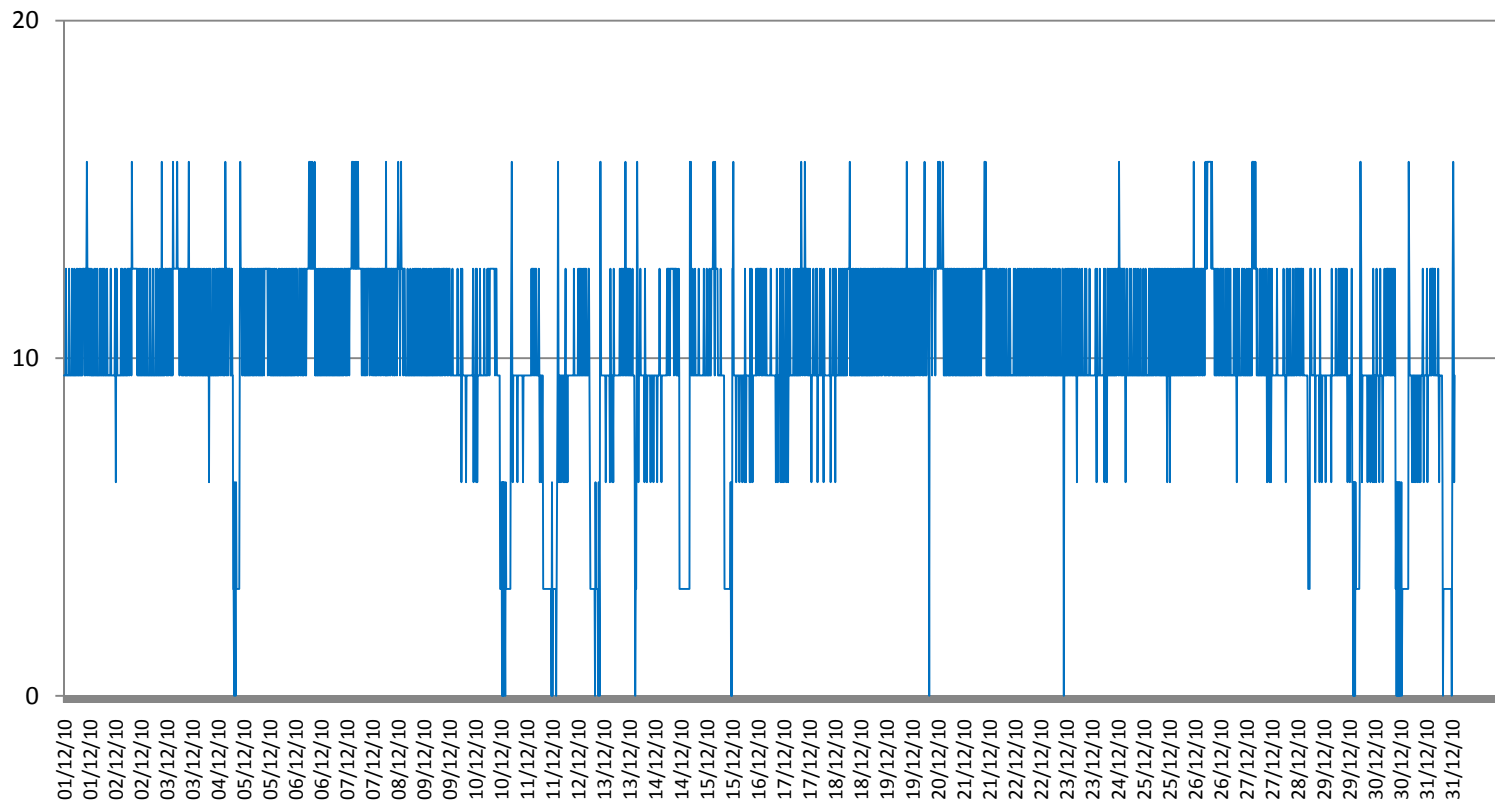




# Arrow Valley Gas Usage Quarter Hourly Data

(kWh per 15 mins)

## December 10 Usage



# Arrow Valley Gas Daily Usage

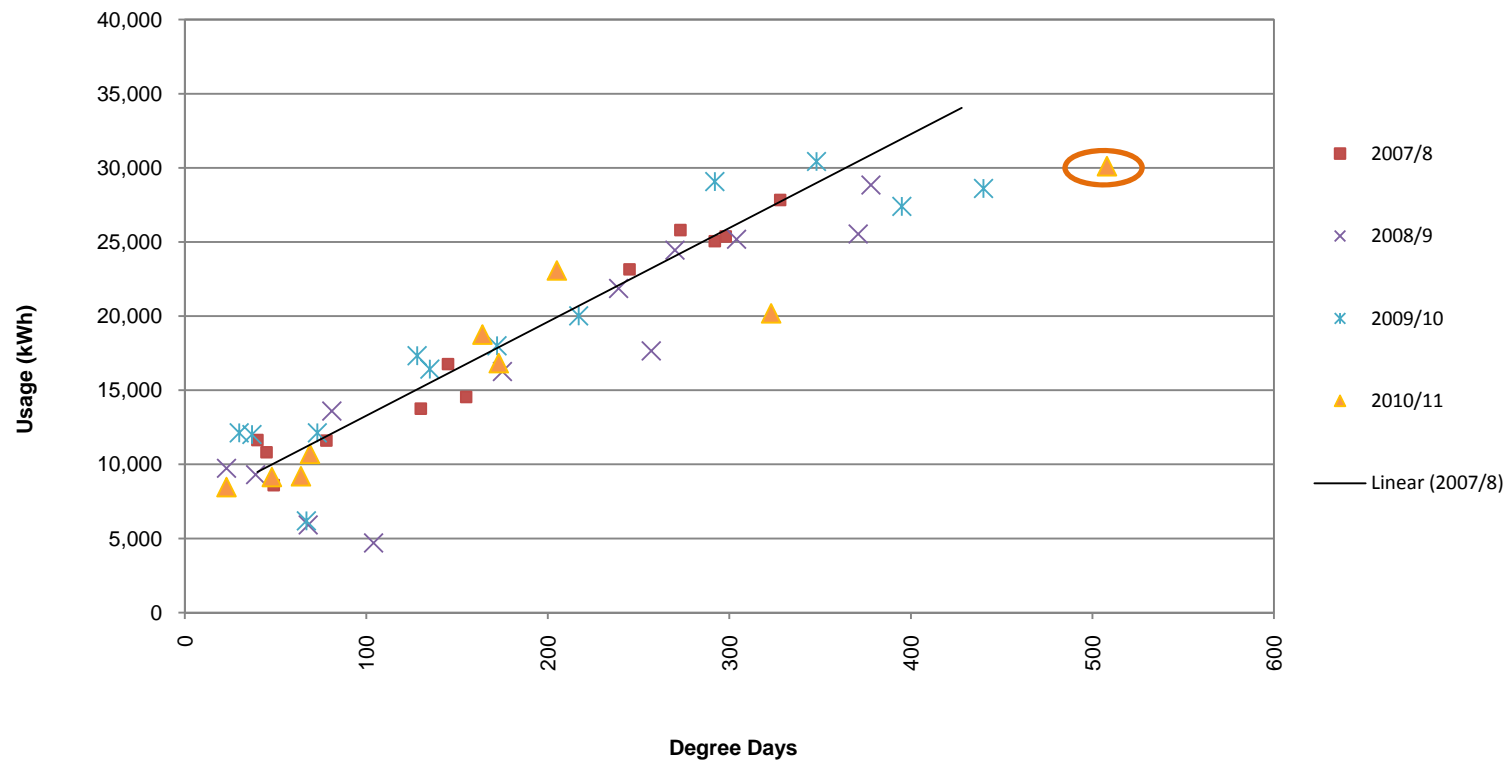
# December 10 Usage



All chart scales run from 0 to 17.3998 kW (average power over 15-minute interval).

# Arrow Valley Gas Usage Degree Day Plot

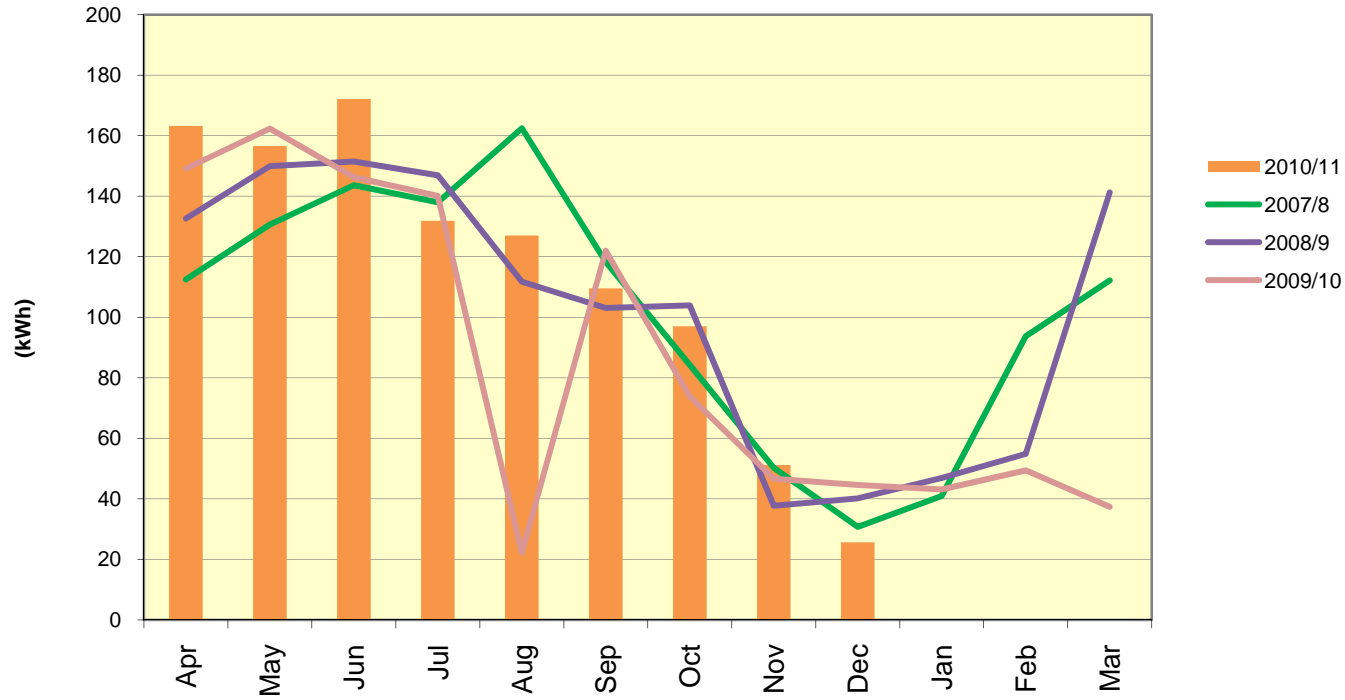
$$y = 63.299x + 6949$$



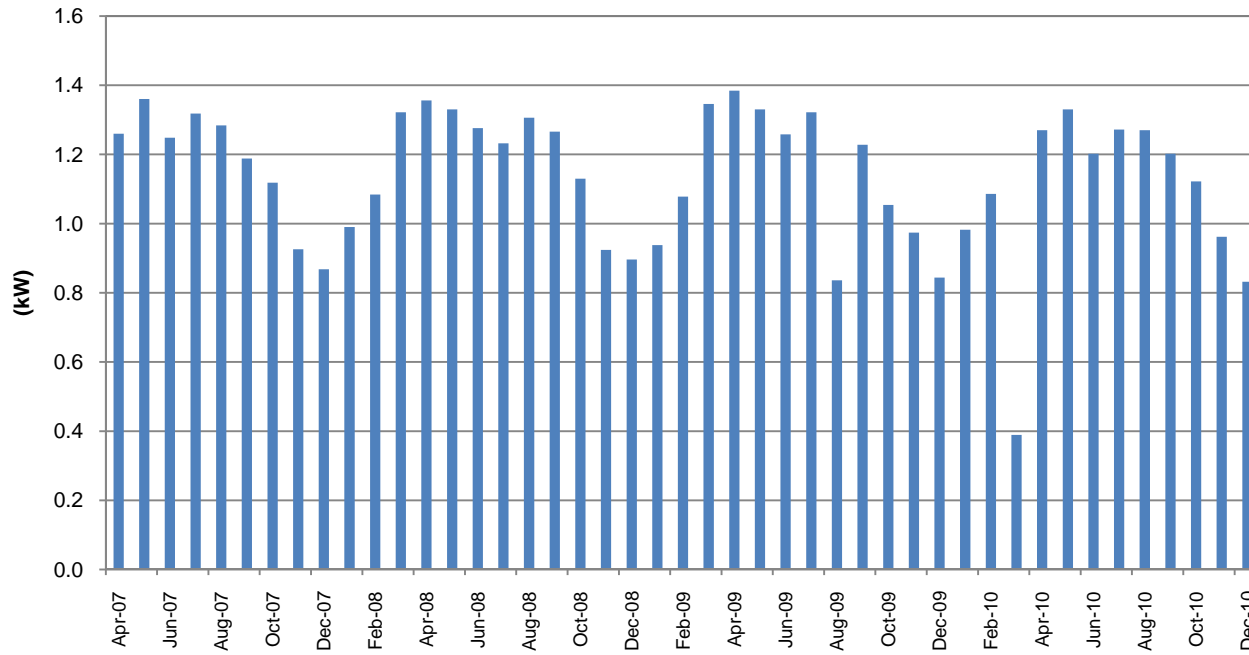
Latest data point ringed in orange = December 10 Usage

(NB. Some missing data in Nov 10 - data point is artificially low)

## Arrow Valley Photovoltaic Cells Monthly Output Trends

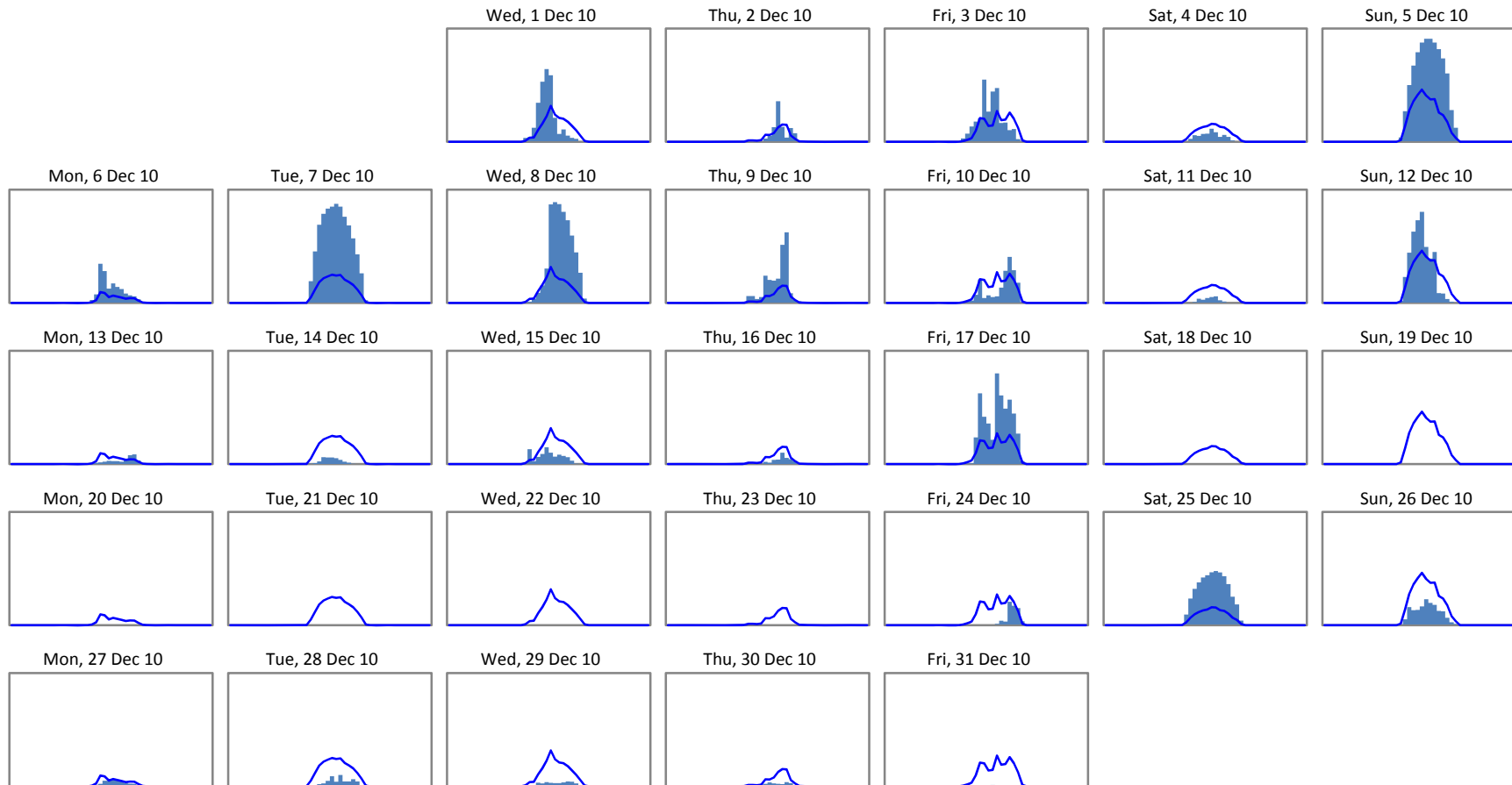


## Arrow Valley PV Maximum Output Trends



# Arrow Valley PV Daily Output

# December 10 Output





# Arrow Valley PV 24 Hour Output Profiles

# December 10 Output

